

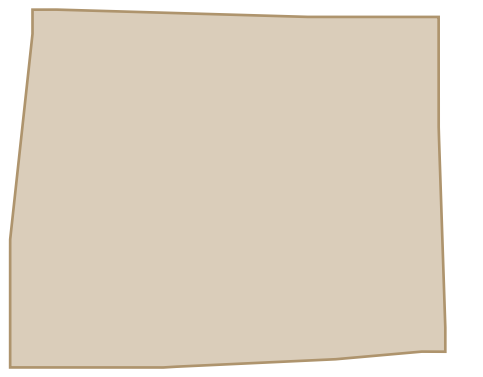
# 70A

## Grand Penthouse

6,941 sq ft

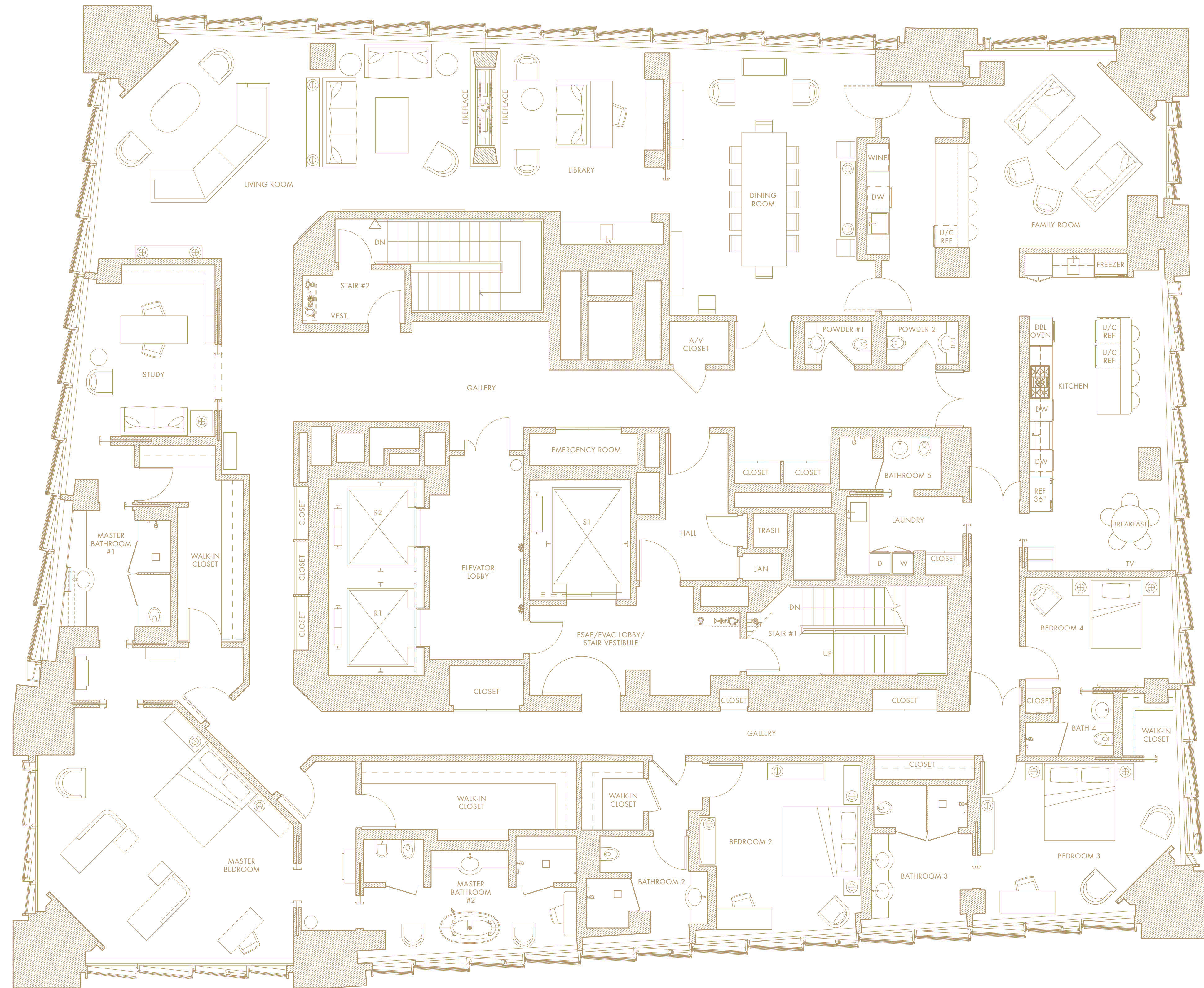
644.8 square meters

- Gracious entry gallery
- Sweeping floor-to-ceiling views in all directions
- 9' ceilings in living room and bedrooms
- Living room with corner entertainment cabinet and fireplace
- Library with fireplace
- Formal dining room with northeast views
- Family room with corner entertainment cabinet and junior kitchen with island and seating
- Hideaway kitchen with sliding panels, double oven, refrigerator and freezer, dual dishwashers, breakfast nook, and bar with seating
- Study with sliding doors
- Master bedroom with northwest and southwest views, corner entertainment cabinet, two walk-in closets, and separate study
- Dual master bathrooms: hers with freestanding soaking tub, separate shower, and water closet; his with shower and water closet
- Second bedroom with en-suite bathroom and walk-in closet
- Third bedroom with en-suite bathroom, corner entertainment cabinet, and walk-in closet
- Fourth bedroom with en-suite bathroom
- Laundry room with en-suite bathroom
- Two powder rooms
- Washer/dryer



HOWARD STREET

FREMONT STREET



LEVEL 70



0' 1' 2' 4' 8'  
SCALE: 3/16" = 1'

