

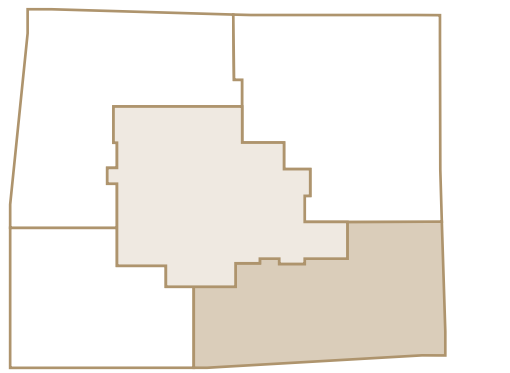
65D

2 Bedroom
2 Bathroom

1,555 sq ft

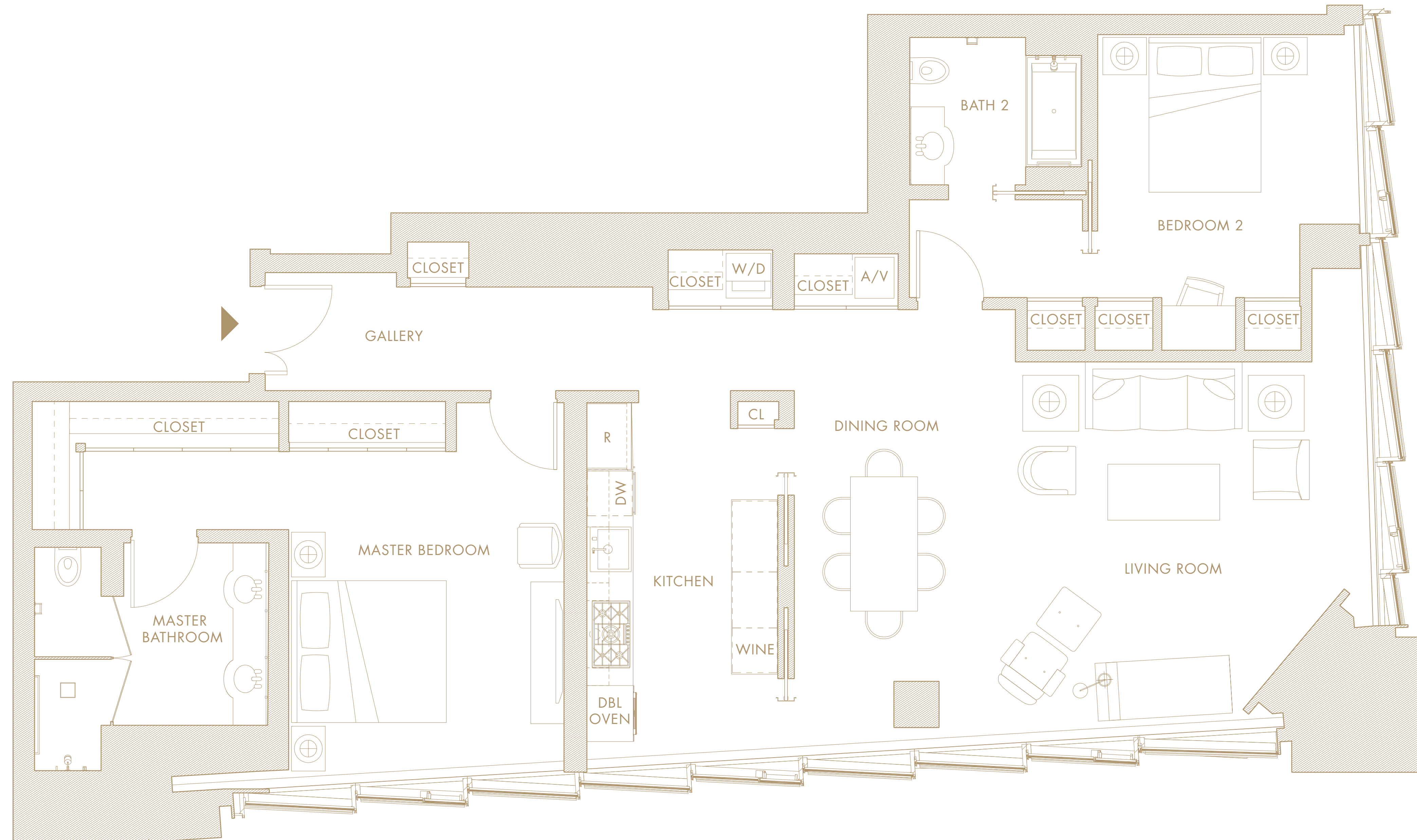
144.5 square meters

- Gracious entry gallery
- Sweeping southwest and southeast floor-to-ceiling views
- 9' ceilings in living room and bedrooms
- Living room with corner entertainment cabinet
- Hideaway kitchen with sliding panels, double oven, refrigerator, dishwasher, and wine storage
- Master bedroom with southwest views
- Master bathroom with shower, water closet, and dual vanities
- Second bedroom with en-suite bathroom
- Washer/dryer



FREMONT STREET

HOWARD STREET



0' 1' 2' 4' 8'
SCALE: 11/32" = 1'

